



is a new generation of a tandem vibratory roller with the high comfort for an operator, with up-to-date design and with splendid visibility from the operator's place. The machine has two split, driven, vibrating, steerable and machined drums - it is designed for mid and large scale compaction jobs at asphalt, loose and semi-cohesive materials. The machine is based on a rigid frame. It is equipped with a hydrostatic drive system, three mode steering system including the "crabbing mode", Cummins engine and hydraulic Sauer-Danfoss. It fulfils the requirements of pollutants emission directives 97/68/ECE Stage 1 and EPA/CARB Tier 1. The machine meets the CE marking conditions.

STANDARD

VH 850 A / VH 950 A

- Cabin ventilated and heated
- Rotating and sliding seat with steering wheel
- Both drums vibrating
- Split drums
- Two mode vibrators
- Backbone frame
- Crabbing up to 1293 mm to both sides
- Both drums are hydrostatically driven
- Working halogen headlights
- Painting STA: yellow, grey

OPTIONS

VH 850 A / VH 950 A

- Operator platform without cabin with rails
- Lockable vandal guard
- Diff lock ASC total (interaxle and interdrum)
- ROPS protection (obligatory for CE)
- ROPS canopy (mounted to ROPS)
- Air conditioning
- Edge cutter (both sides - diagonal)
- Edge cutter
- Beacon
- Back up alarm
- Special painting

MAXIMAL COMPACTED LIFT THICKNESS AT OPTIMAL WORKING CONDITIONS (m)

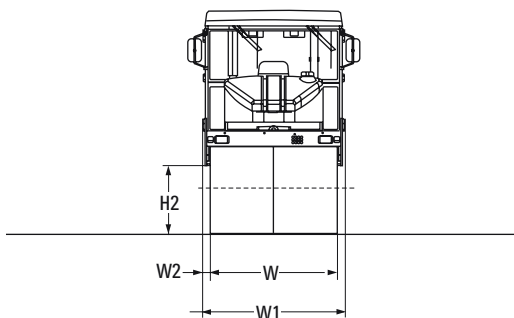
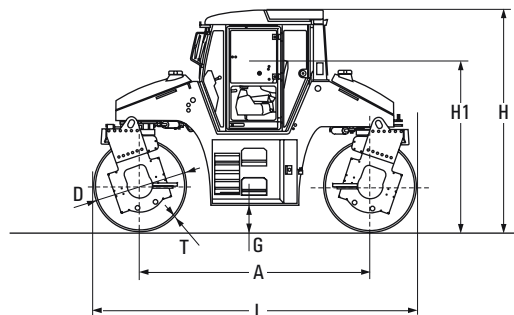
	Asphalt	Sand/Gravel	Mixed soils	Silt	Clay	Stabilization
VH 850 A	0,14 m	0,40 m	0,30 m	-	-	0,25 m
VH 950 A	0,14 m	0,40 m	0,30 m	-	-	0,25 m

VH 850 A VH 950 A



TANDEM ROLLERS (8.5 - 9.5 t)

size (mm)	A	D	G	H	H1	H2	L	T	W	W1	W2
VH 850 A	3060	1200	320	2949	2113	898	4280	16	1680	1827	74
VH 950 A	3060	1200	320	3016	2176	914	4280	17	1680	1827	74



CAPACITY

	VH 850 A	VH 950 A
Operating weight (CECE)	8500 kg	9500 kg
Compacting width maximum	2973 mm	2973 mm
Drum offset	1293 mm	1293 mm

WEIGHTS

Front drum load (CECE)	4250 kg	4750 kg
Rear drum load (CECE)	4250 kg	4750 kg
Front drum linear load	25,3 kg/cm	28,3 kg/cm
Rear drum linear load	25,3 kg/cm	28,3 kg/cm

STEERING

Steering angle (+ -)	25 deg	25 deg
Rear drum steering angle (+ -)	25 deg	25 deg
Oscillation angle (+ -)	6 deg	6 deg
Turning radius inner (edge)	2780 mm	2780 mm
Turning radius outer (contour)	4500 mm	4500 mm
Transversal stability - straight	32 deg	32 deg

RIDING CHARACTERISTIC

No. of travel speeds	1	1
Maximal speed	9 km/h	9 km/h
Gradeability without vibration	35 %	35 %
Gradeability with vibration	30 %	30 %

BRAKES

Operation	Hydrostatic	Hydrostatic
Parking	Multi disc	Multi disc
Emergency	Multi disc	Multi disc

VIBRATION

Amplitudes	0,6 / 0,25 mm	0,6 / 0,25 mm
Frequencies	40 / 50 Hz	40 / 50 Hz
Centrifugal forces	68 / 45 kN	91 / 60 kN

WATERING

	Pressure	Pressure
Watering		
No. of pumps	2	2
Water filtration stages	2	2

TANKS

Fuel	160 lt	160 lt
Watering water	750 lt	1100 lt

ELEKTROINSTALLATION

Voltage	12 V	12 V
Capacity of batteries	135 Ah	135 Ah

ENGINE

Make	Cummins	Cummins
Type	4BT3.3-C85	4BT3.3-C85
Rated power	62 kW	62 kW
Standard	DIN 9249	DIN 9249

Technical modifications and data reserved. Machines may be shown with options.



STAVOSTROJ, a.s.

Náchodská 145, 549 01 Nové Město nad Metují, Czech Republic

phone: +420 491 476 111

fax: +420 491 470 215, 491 470 405

e-mail: stavo@sta.cz, stasales@sta.cz, www.sta.cz

CERTIFICATED:
ISO 9001