



is a new generation of a combined roller with the high comfort for an operator, with up-to-date design and with splendid visibility from the operator's place. The machine is based on a rigid frame. The front axle consists of a vibratory smooth split drum with a machined surface, the rear axle is fitted with four rubber-tyred compaction wheels with a smooth tread. Both axles are driven and steerable. The VH 850 AK is designed for mid and large scale compaction jobs at asphalt, loose and semi-cohesive materials. It is equipped with a hydrostatic drive system, three mode steering system including the "crabbing mode", Cummins engine and hydraulic Sauer-Danfoss. It fulfils requirements of pollutants emission directives 97/68/ECE Stage 1 and EPA/CARB Tier 1. The machine meets the CE marking conditions.

STANDARD

VH 850 AK

- Cabin ventilated and heated
- Rotating and sliding seat with steering wheel
- Split drum
- Four tyred wheels
- Two mode vibrator
- Backbone frame
- Crabbing up to 1293 mm to both sides
- Both drum and wheel are hydrostatically driven
- Working halogen headlights
- Painting STA : yellow, grey

OPTIONS

VH 850 AK

- Operator platform without cabin with rails
- Lockable vandal guard
- Diff lock ASC total (interaxle and interdrum)
- Emulsion watering system of wheels
- ROPS protection (obligatory for CE)
- ROPS canopy (mounted to ROPS)
- Air conditioning
- Edge cutter
- Beacon
- Back up alarm
- Special painting

MAXIMAL COMPACTED LIFT THICKNESS AT OPTIMAL WORKING CONDITIONS (m)

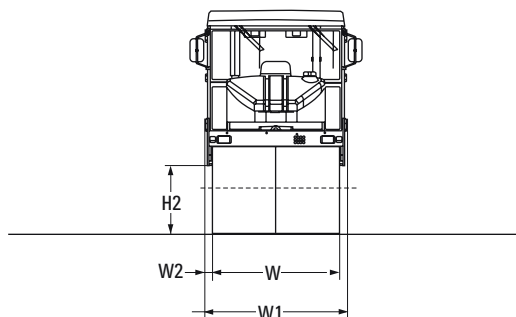
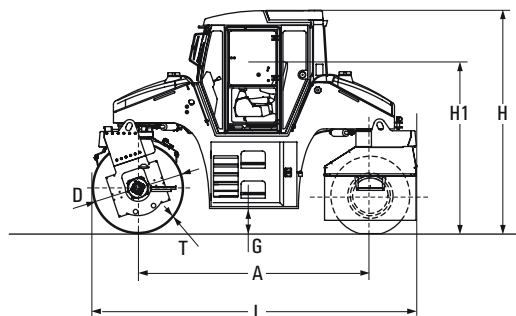
	Asphalt	Sand/Gravel	Mixed soils	Silt	Clay	Stabilization
VH 850 AK	0,13 m	0,40 m	0,30 m	-	-	0,25 m

VH 850 AK



COMBINED ROLLERS (8.5 t)

size (mm)	A	D	G	H	H1	H2	L	T	W	W1	W2
VH 850 AK	3060	1200	320	2949	2113	898	4280	16	1680	1827	74



CAPACITY	VH 850 AK
Operating weight (CECE)	8500 kg
Compacting width maximum	2923 mm
Drum offset	1243 mm

WEIGHTS	
Operating weight maximum	
Front drum load (CECE)	4250 kg
Rear axle load (CECE)	4250 kg
Front drum linear load	25,3 kg/cm

STEERING	
Steering angle (+ -)	25 deg
Steering angle at rear (+ -)	25 deg
Oscillation angle (+ -)	6 deg
Turning radius inner (edge)	2780 mm
Turning radius outer (contour)	4500 mm
Transversal stability - straight	32 deg

RIDING CHARACTERISTIC	
No. of travel speeds	1
Maximal speed	9 km/h
Gradeability without vibration	35%
Gradeability with vibration	30%

BRAKES	
Operation	Hydrostatic
Parking	Multi disc
Emergency	Multi disc

VIBRATION	
Amplitudes	0,6 / 0,25 mm
Frequencies	40 / 50 Hz
Centrifugal forces	68 / 45 kN

WATERING	
Watering	Pressure
No. of pumps	2
Water filtration stages	2

TANKS	
Fuel	160 lt
Watering water	750 lt

ELEKTROINSTALLATION	
Voltage	12 V
Capacity of batteries	135 Ah

ENGINE	
Make	Cummins
Type	4BT3.3-C85
Rated power	62 kW
Standard	DIN 9249

Technical modifications and data reserved.
Machines may be shown with options.



STAVOSTROJ, a.s.
Náchodská 145, 549 01 Nové Město nad Metují, Czech Republic
phone: +420 491 476 111
fax: +420 491 470 215, 491 470 405
e-mail: stavo@sta.cz, stasales@sta.cz, www.sta.cz

CERTIFICATED:
ISO 9001

