



is a new generation vibratory roller with the high comfort for an operator, up-to-date design with the "1 x 1 m" visibility and with an extremely low gravity centre. VV 1100 D is designed for medium and large scale compaction of rockfill, loose, semi-cohesive materials and stabilization. The machine is based on an articulated frame with a hydrostatic drive system of a smooth vibratory drum and two rubber tyred wheels. VV 1100 PD is designed for medium and large scale compaction of semi-cohesive and cohesive materials. The machine is based on an articulated frame with a hydrostatic drive system of a padded vibratory drum and two rubber tyred wheels. Direct drive of the rear wheels through the hydromotors with gearboxes enables a very low built in mounting of the driving power unit, by keeping the minimal length of the machine. It offers to the user the advantage of an excellent view from the operator's place and excellent machine stability and manoeuvrability in comparison with the other machines, which are equipped with the rigid driving axles. The vibration source is a double staged undirected vibration exciter, placed in the centre of the drum. The machine is equipped with a hydrostatic drive of all machine functions, Cummins engine, hydraulic Sauer-Danfoss. It fulfils the requirements of pollutants emission directives 97/68/ECE Stage 2 and EPA/CARB Tier 2. The machine meets the CE marking conditions. **Blade version available.**

## STANDARD

### VV 1100 D / VV 1100 PD

- Cabin ventilated and heated
- Two mode vibrator
- Articulated frame
- Interwheel differential lock
- Hand-pump hood and cabin tilting
- Working halogen headlights
- Painting STA: yellow, grey

### VV 1100 D

- Tyres 23,1-26 tread UK 5 (10 PR)

### VV 1100 PD

- Tyres 23,1-26 tread R1 (TD-01) (10 PR)

## OPTIONS

### VV 1100 D / VV 1100 PD

- Operator platform without cabin with rails
- Lockable vandal guard
- Engine CUMMINS 6BT5.9-C148 (110kW) - Stage 1/Tier1
- Dozing blade
- Diff lock interaxle ASC
- Electrohydraulic cabin and hood tilting
- Engine air pre-cleaner for extra hard conditions
- ROPS protection (obligatory for CE)
- Cabin FOPS protection
- FOPS sun roof (mounted to ROPS)
- ROPS canvas canopy (mounted to ROPS)
- Air conditioning
- Compaction indicator
- Compaction indicator printer
- Fan safety screen
- Alternator safety screen
- Turn indicators
- Beacon
- Back up alarm
- Engine speed indicator
- Tyres ballast liquid filling to 0 centigrades
- Tyres ballast liquid filling to -25 centigrades
- Special painting

### VV 1100 D

- Segment kit 150 pads
- Tyres 23,1-26 tread R1 (TD-01) (10 PR) instead of standard ones

### VV 1100 PD

- Tyres 23,1-26 tread UK 5 (10 PR) instead of standard ones

## MAXIMAL COMPACTED LIFT THICKNESS AT OPTIMAL WORKING CONDITIONS (m)

	Rockfill	Sand/Gravel	Mixed soils	Silt	Clay	Stabilization
VV 1100 D	0,80 m	0,60 m	0,50 m	0,40 m	0,25 m	-
VV 1100 PD	-	-	0,50 m	0,40 m	0,30 m	-



**STAVOSTROJ, a.s.**  
 Náchodská 145, 549 01 Nové Město nad Metují, Czech Republic  
 phone: +420 491 476 111  
 fax: +420 491 470 215, 491 470 405  
 e-mail: stavo@sta.cz, stasales@sta.cz, www.sta.cz

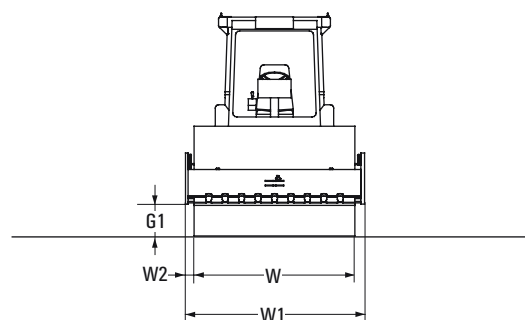
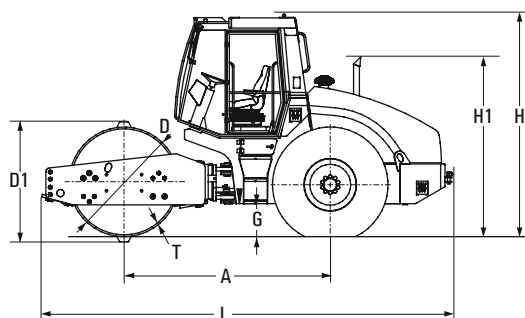
CERTIFICATED:  
**ISO 9001**

# VV 1100 D VV 1100 PD



SINGLE DRUM ROLLERS - SMOOTH & PADDED (11 t)

size (mm)	A	D	D1	G	G1	H	H1	L	T	W	W1	W2
VV 1100 D	2820	1500		420	430	3030	2375	5686	25	2200	2436	118
VV 1100 PD	2820	1440	1640	420	430	3030	2375	5686	20	2200	2436	118



CAPACITY	VV 1100 D	VV 1100 PD
Operating weight (CECE)	11495 kg	11925 kg

WEIGHTS	VV 1100 D	VV 1100 PD
Ballast	1200 kg	1200 kg
Operating weight maximum	12865 kg	13295 kg
Drum load (CECE)	7130 kg	7560 kg
Axle load (CECE)	4365 kg	4250 kg
Static linear load	32,4 kg/cm	

DRUM	VV 1100 D	VV 1100 PD
No. of pad feet		140
Height of pad		100 mm
Contact area of one pad foot		120 cm <sup>2</sup>

STEERING	VV 1100 D	VV 1100 PD
Steering angle (+ -)	36 deg	36 deg
Oscillation angle (+ -)	10 deg	10 deg
Turning radius inner (edge)	3050 mm	3050 mm
Turning radius outer (contour)	5370 mm	5370 mm
Transversal stability - straight	36 deg	36 deg

RINDING CHARACTERISTIC	VV 1100 D	VV 1100 PD
No. of travel speeds	4	4
Maximal speed	10,6 km/h	10,7 km/h
Gradeability without vibration	45 %	45 %
Gradeability with vibration	45 %	45 %

BRAKES	VV 1100 D	VV 1100 PD
Operation	Hydrostatic	Hydrostatic
Parking	Multi disc	Multi disc
Emergency	Multi disc	Multi disc

VIBRATION	VV 1100 D	VV 1100 PD
Amplitudes	1,85 / 1,15 kN	1,85 / 1,15 kN
Frequencies	32 / 35 Hz	32 / 35 Hz
Centrifugal forces	277 / 206 kN	277 / 206 kN

TANKS	VV 1100 D	VV 1100 PD
Fuel	410 lt	410 lt

ELEKTROINSTALLATION	VV 1100 D	VV 1100 PD
Voltage	24 V	24 V
Capacity of batteries	2 x 100 Ah	2 x 100 Ah

ENGINE	VV 1100 D	VV 1100 PD
Make	Cummins	Cummins
Type	QSB5.9-30-T-C155	QSB5.9-30-T-C155
Rated power	116 kW	116 kW
Standard	ISO 3046/1 (DIN 6271)	ISO 3046/1 (DIN 6271)

Technical modifications and data reserved. Machines may be shown with options.



**STAVOSTROJ, a.s.**  
 Náchodská 145, 549 01 Nové Město nad Metují, Czech Republic  
 phone: +420 491 476 111  
 fax: +420 491 470 215, 491 470 405  
 e-mail: stavo@sta.cz, stasales@sta.cz, www.sta.cz

CERTIFICATED:  
ISO 9001

